

PORT OF | KRISTIANSUND
& NORDMØRE

IDEAL FOR
SMALLER SHIPS
AND EXPEDITION
CRUISES

**NEW
DESTINATIONS!**



WELCOME TO CRUISE DESTINATIONS

SMØLA & HITRA

ISLAND GEMS OF THE ATLANTIC OCEAN

2021-2022

SMØLA & HITRA

— ISLAND GEMS OF THE ATLANTIC OCEAN

Looking for new and exciting cruise destinations? The islands of Smøla and Hitra, located between Kristiansund and Trondheim on the north western coast of Norway, are just waiting to be discovered by the cruise tourists too!

Why Smøla & Hitra?

- Unique experiences
- Nature-based activities
- Local produce

The cruise destinations Smøla and Hitra are ideal for smaller ships and expedition cruises with guests looking for unique experiences, nature-based activities and local produce.

Smøla has had a small number of cruise ships already, while Hitra on the other side is a completely new destination on the cruise market. Both destinations are also reachable as shore excursions for cruise ships calling at Kristiansund.

Smøla

Imagine a cruise ship sailing to Smøla, through the 5000 small islands in the archipelago, passing old fishing villages with the sun rising on the horizon. A truly beautiful experience.

Do you think your passengers would enjoy photographing the majestic sea eagle, fishing in the Atlantic, hiking across the rugged landscape or kayaking in the spectacular archipelago? If yes, Smøla is a destination you should consider.

Hitra

Hitra, with its beautiful nature, island-rich archipelago and exciting culture, is a pearl that you will never forget. The island is known for first class local produce such as salmon, crab, deer and cheese.

Wild and charming at the same time, offering experiences in the intersection between the genuine, the untouched and the modern.

Smøla and Hitra – islands to explore and adore.

Welcome!



INDEX

SMØLA

WELCOME TO SMØLA 6

DYRNESVÅGEN HARBOUR 8

CRUISE DESTINATION SMØLA (TENDER PORT) – SERVICES, FACILITIES AND INFORMATION 9

WHAT TO EXPLORE? 10

TOURS AND EXCURSIONS 11-18

OTHER ACTIVITIES 19

HITRA

WELCOME TO HITRA 20

HITRA COASTAL HARBOUR 22

CRUISE DESTINATION HITRA – SERVICES, FACILITIES AND INFORMATION 23

WHAT TO EXPLORE? 24

TOURS AND EXCURSIONS 25-32

OTHER ACTIVITIES 34-35

POSSIBLE COMBINATION

CRUISING THE TODALSFJORD – IDYLIC AND SECLUDED 36

CONTACT INFORMATION 39

TIP!
COMBINE YOUR CALL
AT SMØLA OR HITRA WITH A
CRUISE ON THE IDYLIC AND
SECLUDED TODALSFJORD
– SEE PAGE 36



TOUR SYMBOLS:

- Excursion by bus (or other transportation)
- Tour includes boat trip
- Tour includes a (very) easy walk
- Easy hiking – no experience required
- Medium hiking – some experience recommended
- Tour includes scenic locations
- Tour includes visit to a church or stave church
- Tour includes a museum
- Tour or activity suitable for families with children
- Tour includes a cultural element such as art or music
- Experience local produce
- Tour suitable for smaller groups or can be tailored to VIP customers

LEARN MORE ABOUT CRUISE DESTINATIONS SMØLA & HITRA

www.knhavn.no
www.visitnorthwest.no
www.opplevsmola.no
www.visithitra.com

LOOKING FOR ANOTHER CRUISE PORT IN THIS AREA?

Check out Kristiansund – the top of Fjord Norway and the gateway to the Atlantic Ocean Road. Two cruise quays directly in the city centre within easy reach of attractions, activities and shopping. Ship length up to 300 m.

SMØLA

– sea eagles, islands and islets, culture
and coastal heritage idyll



The beautiful island of Smøla is located in a gap of the Atlantic Ocean, between the cities of Kristiansund and Trondheim.

The main island and the archipelago of thousands of small islands, islets and skerries, in combination with the prairie-like landscape, create the distinctive character that you likely won't find anywhere else in the world.

The archipelago provides exciting areas for fishing and kayaking. The unique, flat landscape is well-suited for biking and hiking in easy terrain. There is rich bird life in the area and you have good chances of seeing the majestic sea eagle.

Smøla also offers small fishing villages in an exciting and different landscape. Experience a genuine and vibrant coastal culture community, where the people still keep the traditions alive.

Until around 1960, there were about 20 fishing villages on small islands around Smøla. Most of them are now abandoned, while in Veiholmen – the largest fishing village south of the Lofoten Islands – there are still people to be found behind the curtains of the houses. Today, Veiholmen has

about 300 permanent residents, mainly engaged in fishing and tourism, and during summer the village is full of life.

Around the island

The west side of Smøla has thousands of small islands and islets. In the north, Veiholmen stretches out like an index finger. In the east, sheltered coves and islands form a delightful archipelago. In the south, there are magnificent panoramic views towards the Tustna mountains, while the countryside on the islands of Edøy and Kuli is very distinctive.

«Thanks very much
for what was a highlight
visit for our guests. We
look forward to our return!»

Trey Buys, Chief Expedition Officer
at Lindblad Expeditions

Who's next!?

Smøla has successfully welcomed a few cruise ships since their first call in 2014.

«National Geographic Explorer», «National Geographic Orion» and «The World» have all called at Smøla.

Do you want to be the next?

DYRNESVÅGEN HARBOUR

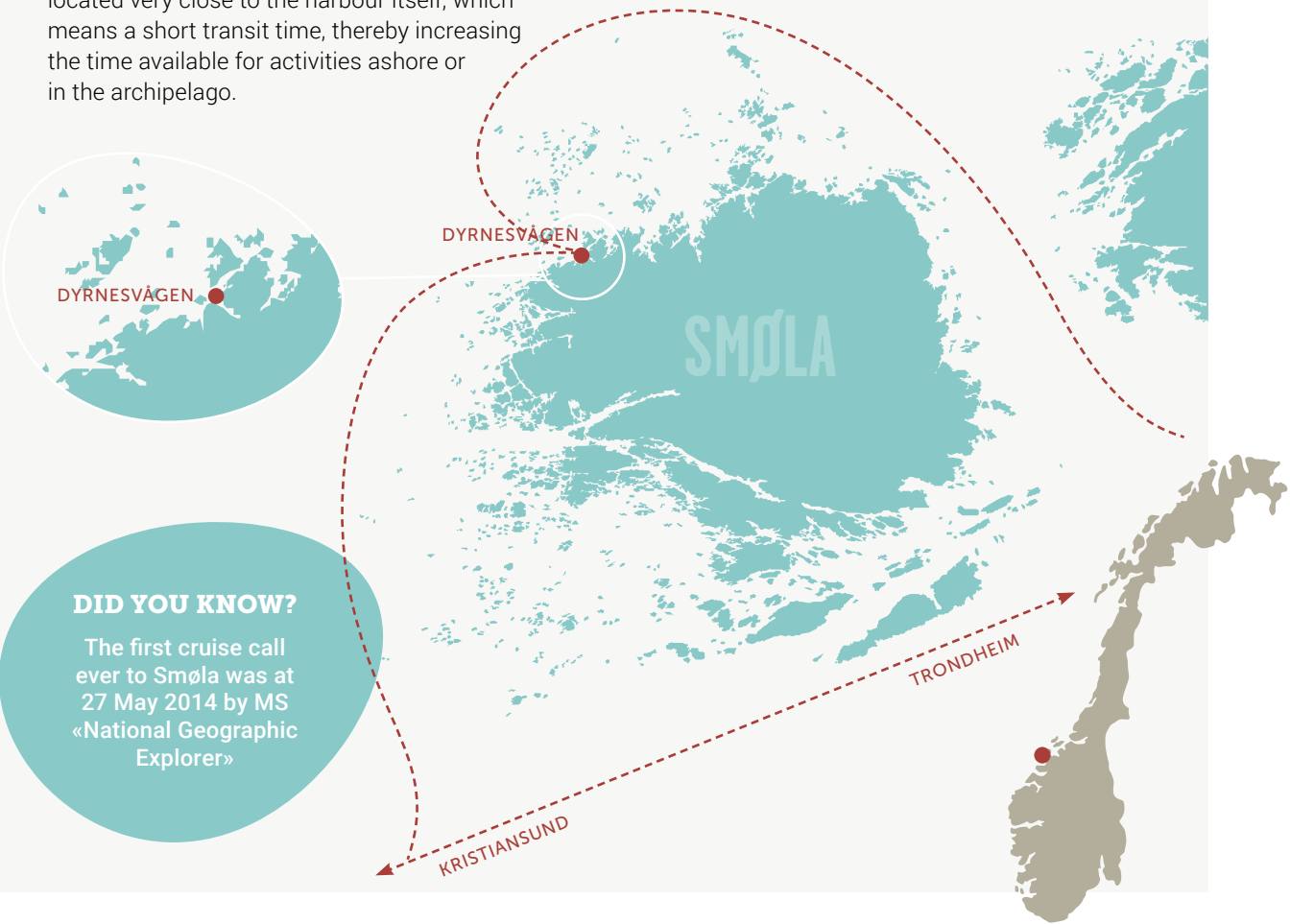
The idyllic Dyrnesvågen harbour is located on the northwestern side of Smøla, well sheltered from the raging Atlantic Ocean just outside.

It is a small harbour, but in the old days Dyrnesvågen was one of Smøla's largest fishery ports. A breakwater was built to make the port more sheltered, but it also made the port entrance somewhat narrower. Operating with a depth of 5 metres, the available width for entrance to the inner port is approximately 20 metres. Therefore, we currently operate mainly with tender operations, located just outside the breakwater.



Aerial view of the Dyrnesvågen area with harbour and breakwater in the lower right corner.

The tender location is also well sheltered and located very close to the harbour itself, which means a short transit time, thereby increasing the time available for activities ashore or in the archipelago.



DID YOU KNOW?

The first cruise call ever to Smøla was at 27 May 2014 by MS «National Geographic Explorer»

CRUISE DESTINATION SMØLA (TENDER PORT)

– Services, facilities and information

PORT OF KRISTIANSUND & NORDMØRE – SMØLA

Astrupsgate 9
NO-6509 Kristiansund N
Norway
Phone: +47 40 00 65 04
Port traffic service: +47 992 99 120
E-mail: info@knhavn.no
Internet: www.knhavn.no
CONTACTS:
Maritime questions and orders: Svein Skomsøy, havnevakt@knhavn.no
Marketing: Erika Indergaard, ei@knhavn.no

GENERAL INFORMATION

Guide service: YES
Turnaround facilities: NO
Terminal/Restrooms in pier area: NO
Shuttle bus: N/A
Parking place for buses: YES
Public transportation: YES
Shopping: Limited
Currency exchange: NO
Internet access in pier area: On request
Distance to airport: Kristiansund Airport Kvernberget, 1.5 hrs
Distance to city center: N/A
Nearest hospital: Kristiansund
Crew facilities: N/A

PORT SERVICES/FACILITIES & INFORMATION

Bunkers delivery/method: YES, by barge/boat
LNG: NO
EPI: NO
ESI: YES, on request
Supplies: YES
Waste handling: NO
Grey water: YES, by barge/truck
Tugboats: YES, on request
Anchorage: YES, only

Ship tender facilities: YES
Tidal movement: Approx. 2 m
Gangway available: N/A
Seawalk: NO
ISPS approved: NO
Restrictions in harbour: NO
Maximum ship length: 195 m
Maximum ship draft: 8 m
Maximum beam: No limit
Maximum air draft: No limit
Bollard strength: N/A

ANCHORAGE/TENDER

Ship tenders allowed: YES, tendering only
Pontoons: YES
Type of bottom: Sand and mud
Depth: 30–40 m
Distance from anchorage to tender pier: 0.9 nm
Tender pier capacity: No limit/regulated by ship size

ANCHORAGE POSITIONS:

Anchor 1, Dyrnes: N 63° 25,94' E 007° 49,25'
Anchor 2, Baholman: N 63° 28,5' E 007° 53,29'

Distance from pilot station

South: Grip/Kristiansund 15 nm/1 hr
North: Kråkvågsfjorden/Flesa 55 nm/4 hrs
Pilot channel 16/13

Ship measurements:

Max. ship length 195 m
Max. ship draft 8 m
Max. air draft No limit

Information updated February 2021.
Subject to possible changes and errors.

WHAT TO EXPLORE?

SMØLA



SMØLA – TOURS AND EXCURSIONS



BRATTVÆR OLD FISHING VILLAGE

1

Visit an old, genuine fishing village, just a short zodiac ride from the ship's anchorage.

Brattvær is a beautiful former fishing village on an island about 3 km northwest of Dyrnes. Once a thriving fishing community, with a population of around 300 in the glory days. Today, no one permanently resides on the island, but it is a popular vacation area for the families of the old fishermen. The last inhabitant left in 2012.

Join a 1 hour guided walk of the island and see how they used to live in the old days, with their own school, prayer house, wharfs and docks. A sneak peek into the past! Many of the buildings are well preserved.

After the walk, enjoy delicious Norwegian waffles at the prayer house, prepared and served by the locals, before listening to a talk on the history of Smøla, the fisheries and the Thule myth.

Duration 3 hrs

Season All year

Capacity On request

Included Guided walk, waffles and talk

Note Not wheelchair accessible

Contact Cruise Smøla (+47) 482 38 830 /
sindre@cruisesmola.com / www.cruisesmola.com

TRY
TRADITIONAL
NORWEGIAN
WAFFLES





DID YOU KNOW?

Veiholmen is the largest fishing community south of the Lofoten Islands

2

TOUR DE VEI HOLMEN

Visit the still active and vibrant fishing village of Veiholmen. Small and charming!

Veiholmen with around 300 inhabitants is located at the northernmost tip of Smøla. Veiholmen was heading the same way as Brattvær and other fishing villages with people moving to the mainland, but they built a bridge, and that made people stay.

The road with its bridges, landfills and protective breakwaters is an adventure in itself. The guided bus tour from the tender pier takes about 30 minutes.

Guided walk in this small but lively fishing community with local cafés and pubs, an exciting museum and coastal heritage idyll.

Duration 3.5 hrs

Season All year

Capacity On request

Included Guided tour by bus and on foot, museum's visit

Note Mainly wheelchair accessible

Contact Cruise Smøla (+47) 482 38 830 / sindre@cruisesmola.com / www.cruisesmola.com



HIKING IN DYRNESDALEN

3



Enjoy the fantastic landscape and maybe also the majestic sea eagle!

This guided hiking tour (2–3 hours, light–medium difficulty) takes you through the flat landscape of Dyrnesdalen and towards the windmill park of Smøla.

You will come pretty close to the windmills, hear them wheezing and see the dimensions. Visit one of the highest peaks of the island (45 m) from which you can see your cruise ship and the beautiful surroundings.

During the hike, you may also encounter wildlife, including the majestic sea eagle.

Duration 3 hrs

Season Spring, summer, autumn

Capacity On request

Included Guided hiking tour

Note Moderate walk, starting directly from the tender pier. Good footwear and clothes according to weather and season are recommended. Not wheelchair accessible.

Contact Cruise Smøla (+47) 482 38 830 / sindre@cruisesmola.com / www.cruisesmola.com



4

SEA EAGLE SAFARI

Join an exclusive safari by boat, looking for the mighty sea eagle!

Smøla has the densest populations of the white-tailed eagle – the sea eagle – in the world. This guided safari starts with a scenic and comfortable boat ride to the prime location for sea eagles, far off the beaten track. A RIB boat will take you even further into the land of sea eagles. Explore the rich wildlife of the area and get an insight into the life of the fascinating eagle.

The safari offers good chances of close encounters with the eagles and you will have fantastic photographic opportunities.

We recommend that you bring a tele-lens. 70-200/300/400 mm are perfect for eagle photogra-

phy. The tour can be upgraded with a visit to a photo hide.

**Highly recommended
for photographers!**



Duration 3 hrs

Season All year

Capacity Max. 11 per boat

Included Guided safari by boat

Note Necessary equipment for the boat ride will be provided. Footwear and clothing suitable for weather and season. Not wheelchair accessible.

Contact Cruise Smøla (+47) 482 38 830 /
sindre@cruisesmola.com / www.cruisesmola.com



5

KAYAKING IN THE ARCHIPELAGO

THE
ARCHIPELAGO
SURROUNDING
SMØLA IS PERFECT
FOR KAYAKING!



**Go kayaking in the shallow and
spectacular archipelago, well
hidden from weather and waves.**

The area is sheltered with small channels and numerous inlets and reefs. The big waves from the Atlantic Ocean are not far away, but at a safe distance. The battering creates a powerful sound that very well can be heard from a small kayak gliding through the seas between the islets.

Enjoy a spectacular trip with crystal clear water and tranquillity of nature. Use your senses: listen, see and smell the scenery...

This tour is also suitable for beginners and children. The guide introduces you to the kayak, shows the basic paddle techniques and makes sure you are safe and comfortable during the tour.

Duration 3–4 hrs

Season All year

Capacity Max. 8 per guide

Included Guided kayaking tour and necessary equipment

Note This activity is weather dependent

Contact Cruise Smøla (+47) 482 38 830 /
sindre@cruisesmola.com / www.cruisesmola.com



6

CULTURAL SMØLA



Visit a beautifully located old church and enjoy an intimate and special concert.

Start with a short, guided bus ride to the western part of Smøla and the old Brattvær church, located in beautiful scenery. The guide will take you for a short and easy walk to enjoy the views from the nearby hillside before you enter the church and learn about its dramatic history.

An intimate and special concert will be held for you, with local artists performing local music.

OPTIONAL ADD-ON: Taste local food.

Duration 3 hrs

Season All year

Capacity Max. 40 per bus

Included Guided tour and local music

Note Wheelchair accessible

Contact Cruise Smøla (+47) 482 38 830 /
sindre@cruisesmola.com / www.cruisesmola.com



DEEP SEA FISHING

7

The waters surrounding Smøla are known for an abundance of fish. Try your luck!

Enjoy fishing? Let a skipper who knows the area well take you to the best fishing spots! Board a traditional fishing boat (approx. 50 ft/15 m) and head out for a few hours of angling. Halibut, haddock, mackerel, plaice, tusk and cod are most likely to be hooked.

Whatever the catch of the day may be, it will be cleaned and delivered onboard.

Duration 4 hrs

Season All year

Capacity Max. 10 per boat

Included Boat trip with skipper. Fishing and safety equipment.

Note Not wheelchair accessible

Contact Cruise Smøla (+47) 482 38 830 /
sindre@cruisesmola.com / www.cruisesmola.com



8

AQUACULTURE VISITOR CENTRE



Unique opportunity to learn more about the Norwegian fish-farming industry!

The Aquaculture Visitor Centre at Smøla is located at Edøya, about 35 minutes' drive from the tender pier. This is one of around 20 public viewing facilities in Norway.

Upon arrival, enjoy the exhibition showing the life cycle of salmon, innovation processes, the history of aquaculture and much more (around 20 min.). Written information in Norwegian, English and German.

Continue with an exciting visit to the full-scale fish farm at Hestøya, about 5 minutes' boat ride from the centre. Here you will gain first-hand

knowledge of how fish-farming is practiced and observe aquaculture specialists in action. You can also participate in feeding the salmon.

OPTIONAL ADD-ON: Salmon lunch at a local restaurant.

Duration 3 hrs

Season May–September, all year upon request

Capacity Max. 12 per boat, max. 24 in one group

Included Guided tour at the centre and the fish farm

Note The cages are accessed by speed boat, and visitors will get necessary safety equipment to wear at sea. Guiding in English. Café at the centre.

Contact Gurisenteret /Nekton Havbruk AS
(+47) 919 10 519 / 941 09 220 / christian@nekton.no / www.smolaks.no

LOOKING FOR OTHER THINGS TO DO?

Smøla offers a range of activities, which can all be tailored to suit your passengers' needs.



Smøla by bike

A bicycle ride on Smøla is a great experience! The weather will determine the pace of the trip. There are almost no hills here, but you can get the resistance of the wind if you are a bit unlucky. You will see the ocean and the sky all the way. Anyone can do this ride. The major elevations are the bridges you may encounter, such as the bridge on the road to Veiholmen.



Cruising the archipelago

A private boat trip for you and your family or friends can be arranged.



Visit Haugjegla lighthouse

Go ashore at this popular destination, situated on the northern tip of the island, just a short boat trip from Veiholmen. Guided tour on request.



Golfing at Dynesdalen (9 holes)

Beautifully situated woodland course. Putting green, driving range, rent of equipment, golf simulator, café/kiosk. The course is sloped. Season: April–November.



HITRA

– great adventures on a small island

**EXPLORE THE
BIG 3 OF HITRA:
DEER, SALMON
AND CRAB**

Experience Norway's incredible coast,
all in one island!

Hitra is greatly influenced by the rough sea and the forces of nature, with large variations in topography, vegetation and wildlife. Wooded hills, high mountains, large marshes, calming fjords, open sea and an archipelago with thousands of islands, islets and skerries.

Let yourself be transported in time, drawn in by the exciting history of Hitra, dating back 11 000 years. From the Iron Age and traces of people from Norway's oldest settlement, to the time when the roots back to the millennial coastal culture were still strong, and the transition to the new era of mechanization and technical innovations.

At Hitra, you will be well taken care of by the locals: they are warm, welcoming and nice to deal with. Not least, they are proud of their island and they are ready to share their enthusiasm with you.

Hitra is a gem you
will never forget!

«Hitra can not be
described, it must
be experienced!»

Ann Louise Nielsen,
guide at Hitra

LOCAL PRODUCE TASTES BEST LOCALLY

Hitra is recognized for – and very proud of – its first-class local produce. Salmon, crab, deer and cheese are among the culinary highlights, and why not try it served with locally brewed beer?

Deer

Hitra has Northern Europe's densest deer strain, with an annual catch of 500-1000 animals. In addition, the DalPro farm has invested in deer farming and wild sheep farming. The free-ranging life, the climate and the flora of the island add a unique flavour of wild nature.

Salmon

It is almost 50 years since the Grøntvedt brothers started with farming of Atlantic salmon just outside Hitra, and it is now a world-leading industry. The Gulf Stream from the south meeting the cold

water from the Barents Sea in the north provides optimal conditions for salmon farming. The fish thrive, and in combination with good knowledge and modern technology, salmon of the highest quality are harvested all year around.

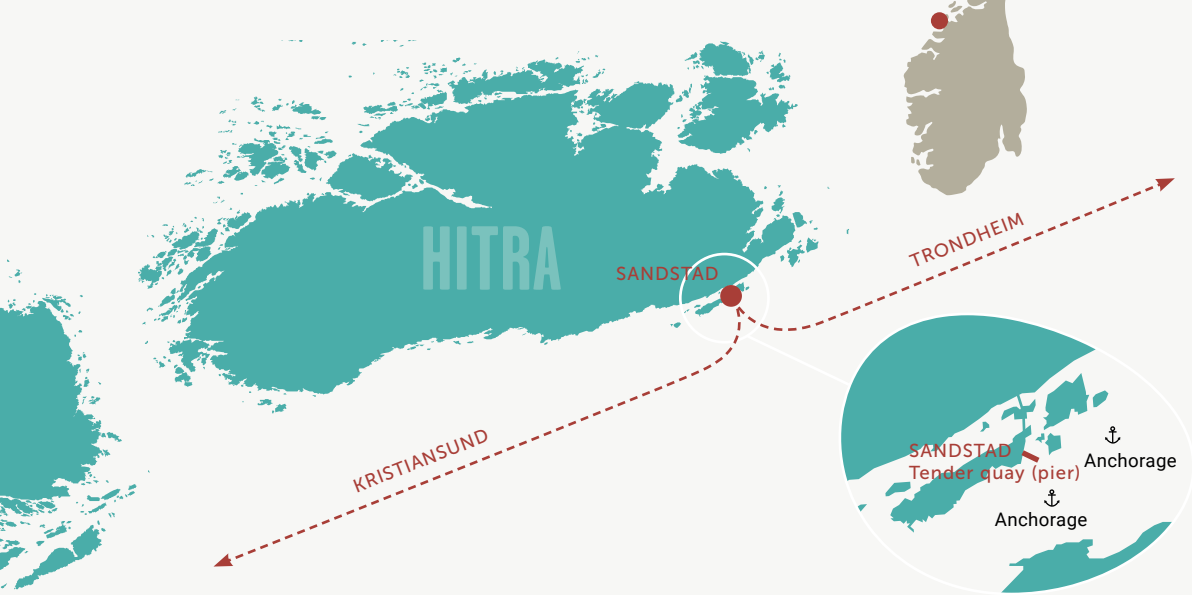
Crab

The crab products from Hitra are well-known for their high quality – quality that comes from the crab's original habitat in the cold, clean waters here. Outside Hitra is the largest brown crab fishing area in Norway, and the local company HitraMat has the most modern factory for brown crab in Europe. They began exporting crabs as long ago as the 1950s.

TIP! Taste the award-winning, local «grotteost» (cave cheese) from «Hitra Gårdsmat».

HITRA COASTAL HARBOUR

Hitra Coastal Harbour at Sandstad is located in the main shipping lane between Kristiansund and Trondheim. The harbour opened in 2014 and offers modern quay facilities. In the coastal harbour, cruise ships can dock or tender, depending on ship size and availability.



CRUISE DESTINATION HITRA

– Services, facilities and information

PORT OF KRISTIANSUND AND NORDMØRE – HITRA

Astrupsgate 9
NO-6509 Kristiansund N
Norway
Phone: +47 40 00 65 04
Port traffic service: +47 992 99 120
E-mail: info@knhavn.no
Internet: www.knhavn.no
CONTACTS:
Maritime questions and orders: Svein Skomsøy, havnevakt@knhavn.no
Marketing: Erika Indergaard, ei@knhavn.no

GENERAL INFORMATION

Guide service: YES
Turnaround facilities: NO
Terminal/Restrooms in pier area: YES
Shuttle bus: N/A
Parking place for buses: YES
Public transportation: YES
Shopping: Limited
Currency exchange: NO
Internet access in pier area: YES
Distance to airport: Kristiansund Airport Kvernberget 3.5 hrs, Trondheim Airport Værnes 2.5 hrs
Distance to city center: N/A
Nearest hospital: Orkanger
Crew facilities: N/A

PORT SERVICES/FACILITIES & INFORMATION

Bunkers delivery/method: YES, by barge/boat
LNG: NO
EPI: NO
ESI: YES, on request
Supplies: YES
Waste handling: YES
Grey water: YES, by barge/truck
Tugboats: YES, on request
Anchorage: YES

Ship tender facilities: YES
Tidal movement: Approx. 2 m
Gangway available: On request
Seawalk: NO
ISPS approved: YES
Restrictions in harbour: NO
Maximum ship length: 180 m at berth, at anchor no limits
Maximum ship draft: 11.5 m at berth, at anchor no limits
Maximum beam: No limit
Maximum air draft: No limit
Bollard strength (certification): N/A

ANCHORAGE/TENDER

Ship tenders allowed: YES
Max size: No limit
Pontoons: YES
Type of bottom: Sand and mud
Depth: 21–60 m
Distance from anchorage to tender pier: 0.5–1.0 nm
Tender pier capacity: No limit/regulated by ship size

ANCHORAGE POSITIONS:

N 63° 31,26` E 009°09,02`

Quay at Hitra Coastal Harbour:

Length 80 m
Draft 12 m
Height quayside According to Norwegian standards

Ship measurements:	AT QUAY	AT ANCHOR
Max. ship length	180 m	No limit
Max. ship draft	11.5 m	No limit
Max. air draft	No limit	No limit

Information updated February 2021.
Subject to possible changes and errors.

WHAT TO EXPLORE?

HITRA



9	THE SALMON ISLAND HITRA	25
10	BACK TO THE IRON AGE – A VIKING EXPERIENCE	26
11	TASTE OF HITRA	27
12	HIKING AT THE OCEAN'S EDGE	28
13	SEA EAGLE SAFARI AT DOLMSUNDET	29
14	HOPSJØ OLD TRADING CENTRE	30
15	VISIT A CRAB FACTORY	31
16	EXHIBITION AT THE COASTAL MUSEUM	32

HITRA – TOURS AND EXCURSIONS



THE SALMON ISLAND HITRA

9



HAND-FEED
THE SALMON!

Learn the story of the fish farming industry through an educational exhibition and an exciting visit to a salmon farm.

In 1971, the brothers Ove and Sivert Grøntvedt put 20 000 salmon smolt into what is considered to be the first fish farm in the world, just off the coast of Hitra. Many years later, Hitra and the neighbouring island of Frøya have become one of the world's biggest fish farming locations.

Start with the fish farming exhibition, describing the modern Norwegian fish farming industry and putting it into a local, national and international perspective. Continue with an exciting and unique visit to a fish farming facility, where you can take part in hand feeding of the fish.

OPTIONAL ADD-ONS:

- Go ashore on a small island with a charming lighthouse and enjoy a delicious salmon lunch, served with locally produced beer.
- Visit a top modern fish processing factory.

Duration 2–4.5 hrs

Season March–November

Capacity 10–36 persons

Included Bus transport, local guide, exhibition, RIB boat to fish farm

Note Floatation suits, life jackets and goggles will be provided on the RIB. Footwear and clothing suitable for weather and season. Not wheelchair accessible.

Contact Explore Hitra (+47) 919 14 171 / post@explorehitra.no / www.explorehitra.no



10

BACK TO THE IRON AGE — A VIKING EXPERIENCE



Historical experiences in reconstructed longhouse from the Iron Age.

Dolmsundet is a 30-minutes bus drive from the terminal building at Sandstad. Here you are on historical ground, with traces of people from Norway's oldest settlement, and an authentic, reconstructed Iron Age longhouse.

Hear the history of the longhouse and how it was to live in Dolmsundet 1600 years ago. Enjoy a cup of mead and the unique and magical atmosphere around the campfire, just like the Vikings did...

Mead is made from honey, water and yeast, usually associated with the Norse Gods and the Viking Age, when it was considered a festive drink.

On the way back, stop for a stroll across the 462 m long Dolmsund Bridge and admire the stunning view.

OPTIONAL ADD-ON: Iron Age meal in the longhouse.

Duration 3.5–4.5 hrs

Season All year

Capacity 10–45 persons

Included Bus transport, local guide, taste of mead

Note Leisurewear with several layers is recommended. Clothes may smell of campfire afterwards. Not wheelchair accessible.

Contact Explore Hitra (+47) 919 14 171 / post@explorehitra.no / www.explorehitra.no



TASTE
AWARD-WINNING
LOCAL PRODUCE

11

TASTE OF HITRA

Hitra is renowned for its dense population of red deer. Visit a deer farm and take part in hand feeding of the deer.

Guided bus tour (approx. 20 min.) to the DalPro farm, a company offering a meaningful workplace for people who need support to get employment. At Hitra, the participants are engaged in deer and wild sheep farming, food production and more.

The farm has won awards for its cured leg of mutton, and also provides a variety of other high-quality food products. Farm shop with meat products and skins of deer and wild sheep.

Learn about the farm and its activities before you take part in hand feeding of the tame deer – a unique experience making both children and adults smile. Also, some of the wild sheep are

very fond of cuddling.

OPTIONAL ADD-ONS:

- Lunch based on local produce, such as barbecue game burger.
- Visit Hitra wind farm, located at Eldsfjellet, with wonderful views of the archipelago and the diverse nature of Hitra.

Duration 2–5 hrs

Season All year

Capacity 10–45 persons

Included Bus transport, local guide, farm visit and hand feeding of the deer

Note Good footwear and clothes according to weather and season. Not wheelchair accessible. Tour to wind farm partly by bus and on foot.

Contact Explore Hitra (+47) 919 14 171 / post@explorehitra.no / www.explorehitra.no

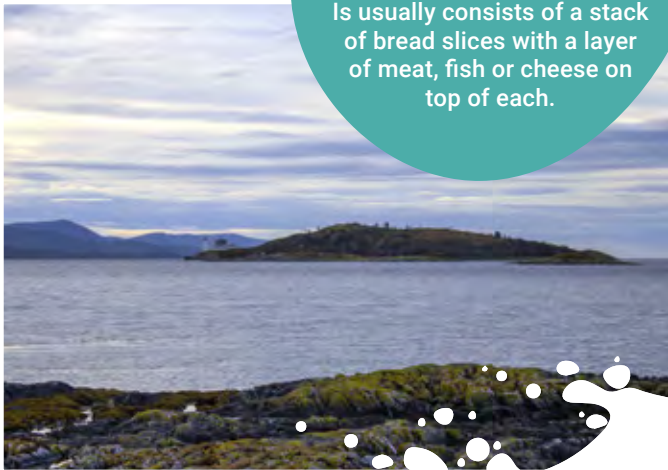


12

HIKING AT THE OCEAN’S EDGE

DID YOU KNOW?

«Matpakke» is a common way of having lunch at schools, workplaces and during hiking. Is usually consists of a stack of bread slices with a layer of meat, fish or cheese on top of each.



Enjoy fresh air, great views and a traditional Norwegian «matpakke».

Join a guided hiking tour along «Ulvøystien», a hiking trail with a magnificent view over the ocean, the neighbouring island of Frøya and the mainland on the inward side. A drive of about 35 min. from the harbour.

From the starting point, follow the trail to its highest point, 50 metres above sea level. Turn west and hike along the ocean on bare rock-face, stony beaches and ravines. The trail is well secured with bridges, steps, ladders and rope in exposed places. Turn into the island and follow the coastal moor back to the starting point. The whole round trip takes about 2.5 hrs.

Stop along the way to enjoy a Norwegian «matpakke» with sandwich, drinks and fruit.

OPTIONAL ADD-ON: Stop in idyllic Knarrlagsund for lunch based on local produce.

Duration 4–5 hrs

Season March–November

Capacity 10–45 persons

Included Bus transport, local guide, packed lunch

Note Hiking trail is approx. 7.5 km. Good footwear and clothes according to weather and season are recommended. Not wheelchair accessible.

Contact Explore Hitra (+47) 919 14 171 / post@explorehitra.no / www.explorehitra.no



13

SEA EAGLE SAFARI AT DOLMSUNDET

Join a historical voyage in Dolmsundet and watch for the majestic sea eagle.

The organization «The Night Sailors» is taking care of, and restoring, old wooden boats once used for herring fishing. Board one of these old boats at Hopsjøbrygga for an exciting sea eagle safari. The sea eagle is the largest bird in Norway measured by wingspan. The females can be up to 2.40 m.

A local guide will tell you about Hitra, the history of the island and the people living there.

Sail through the idyllic Dolmsundet, and out there, between the many islands, islets and skerries, the boat lies for a while to experience the wildlife, cast the fishing lines and enjoy nature's beauty.

Coffee and soft drinks are served on board.

OPTIONAL ADD-ON: Lunch on local produce in the old warehouse restaurant.

BRING YOUR CAMERA AND TAKE UNIQUE PHOTOS!



Duration 3–4 hrs

Season Spring, summer, autumn

Capacity Max. 12 persons

Included Bus transport, local guide, boat trip, coffee/soft drinks

Note Bus drive of approx. 35 min. from terminal building to pier at Hopsjø. Not wheelchair accessible.

Contact Explore Hitra (+47) 919 14 171 / post@explorehitra.no / www.explorehitra.no



HITRA – TOURS AND EXCURSIONS



14

HOPSJØ OLD TRADING CENTRE

Experience a maritime environment with a long history and one of Norway's oldest general stores.

Hopsjø was one of the coast region's largest trading centres in the 1700s and 1800s. International connections were established with freight boats for fish products.

The trading centre was in operation until 1953. Explore this fascinating place with so many interesting stories to tell!

Visit the old general store with a great collection of ancient artefacts and advertising signs from the retail sector. See the whaling exhibition with authentic objects and tools. The whaling station,

in operation from 1926-1952, caught around 100 whales every year and employed a large number of men. Have a look at the beautiful, old and restored wooden boats, once used for herring fishing. If the weather permits, enjoy a short boat trip.

OPTIONAL ADD-ON: Lunch based on local produce in the old warehouse restaurant.

Duration 3.5–4.5 hrs

Season April–October

Capacity 10–90 persons

Included Guided bus tour, guided visit and museum

Note Bus drive of approx. 35 min. from terminal to Hopsjø. Partly wheelchair accessible.

Contact Explore Hitra (+47) 919 14 171 / post@explorehitra.no / www.explorehitra.no

HITRA – TOURS AND EXCURSIONS



VISIT A CRAB FACTORY

15

Parmesan cheese comes from Italy. Champagne comes from France. Brown crab comes from Hitra.

Guided bus excursion to the village of Ansnes on the north-eastern side of Hitra. Ever since the 18th century, trading with fish and seafood has been going on here.

The company HitraMat has been harvesting the brown crab from the nearby sea since 1930. The crabs were prepared and sold to the people along the coast and in Trondheim. Eventually, in the 1950s, they started to export. HitraMat also sells locally harvested scallops and langoustines of prime quality.

On this tour, you pay a visit to one of Europe's most modern factories for brown crab, located close to the largest fishing grounds for crabs in Norway. In the crab season, from May to December, the fishermen supplying crab of superior quality every day, annually amounting to around 3500 tons.

OPTIONAL ADD-ON: Crab lunch and home brewed beer at Ansnes Brygger.

Duration 3.5–4.5 hrs

Season On request

Capacity Max. 12 persons

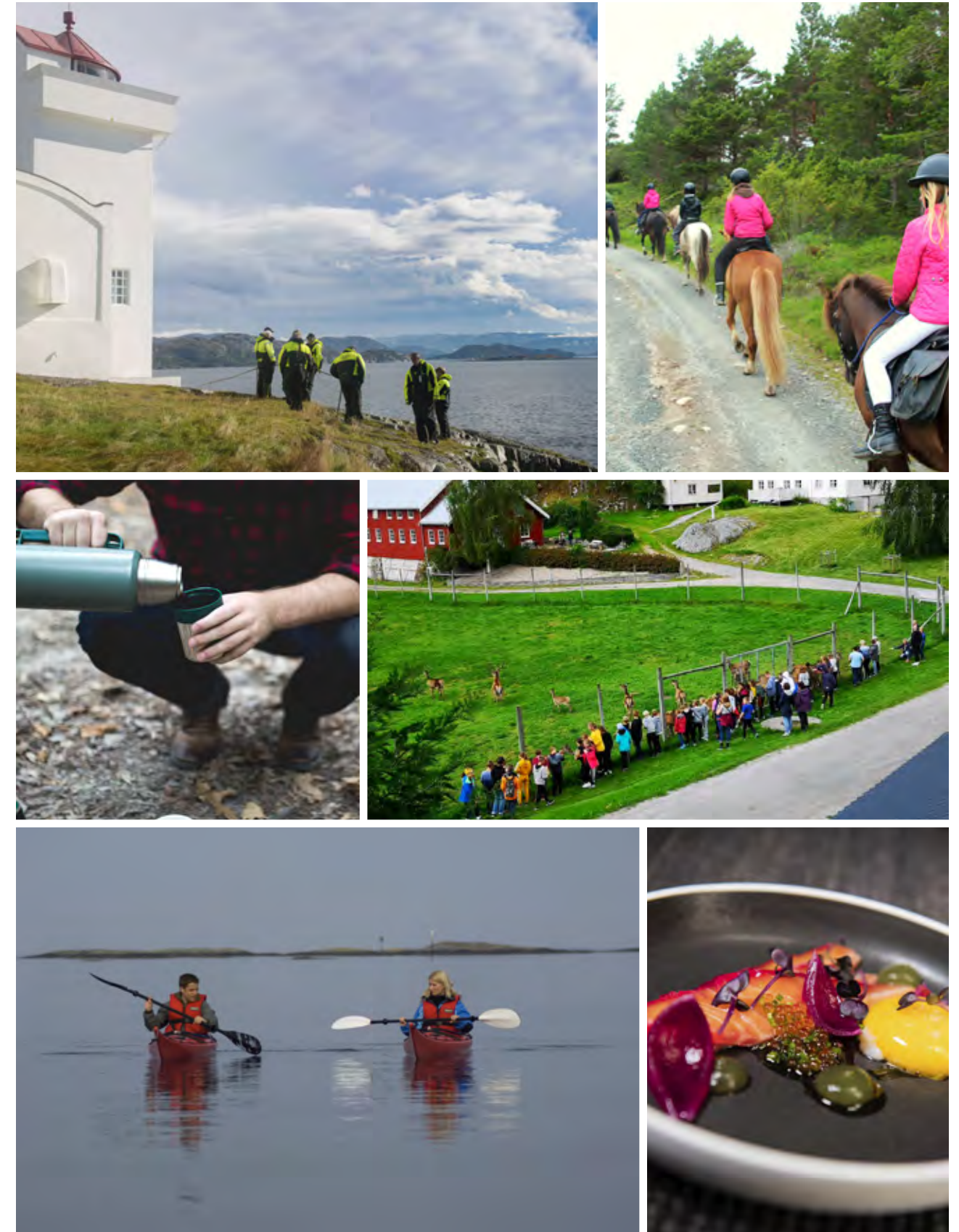
Included Bus transport, local guide, boat trip, coffee/soft drinks

Note Not wheelchair accessible

Contact Explore Hitra (+47) 919 14 171 / post@explorehitra.no / www.explorehitra.no



HITRA – TOURS AND EXCURSIONS



16

EXHIBITION AT THE COASTAL MUSEUM

Visit the Coastal Museum at Filan to see the exhibition “The people in Flatvika”, portraying a family consisting of several generations living together on a typical coastal farm in 1920.

This period represents an important watershed: the transition from the thousand-year-old coastal culture to the modern era. In Flatvika, they have both a cream separator and a sewing machine, and the oldest boy dreams of getting a motorboat.

When you come to Flatvika you get to meet some of those who live on the farm. Through an audio guide you can hear them talking to you, telling their story.

TIP! All Hitra tours can be combined with a visit to the museum.

Duration 1.5 hrs

Season All year

Capacity On request

Included Bus transport, local guide, museum

Contact Kystmuseet (+47) 72 44 40 10 /
post@kystmuseet.no / www.kystmuseet.no

LOOKING FOR OTHER THINGS TO DO?

The possibilities on Hitra are endless, and most activities can be customized.



Kayaking

Surrounded by hundreds of islands, you can paddle your way out to the great North Sea if you like. Gliding through the water and becoming at one with nature is amazingly liberating. Excellent conditions for both the novice and the experienced kayaker.



Cruising the archipelago

Rent a day cruiser with driver if you'd like a smooth and comfortable excursion around the beautiful archipelago. The boat usually carries 6-8 passengers.



Try your fishing luck

The skerries and the ocean around Hitra are one of the Norwegian coast's, not to say the world's, best areas for deep sea fishing, offering a rich variety of species. The most common are cod, coalfish, pollack, haddock, cusk, mackerel, halibut, salmon and sea trout.

Hitra also has more than 700 fresh water lakes, and in several of them the chances of catching trout are great.

TIP! You don't need to be a passionate fisher to enjoy this activity. There are also boats and equipment suitable for families that want to go fishing in sheltered waters.



Experience Hitra from horseback

Hitra Horse Centre can arrange custom-made tours for children, families and friends. A trip to Munkedal beach is a great nature experience for both the beginner and the more experienced rider.



Culinary tour

What about an exciting gastronomic tour, where you can try a range of locally produced products from Hitra? The tour could include a visit to Hitra Gårdsmat, known for their delicious cheeses, the DalPro Farm, with premium local produce of deer and wild sheep, and finally HitraMat, known for its delicious seafood products, such as crab and lobster.



War memorial exhibition and bunker visit

The small island of Hemnskjela is located south of Hitra. Due to its strategic location, the island became very important for the occupying power during World War II. Around 700 German soldiers, bringing 100 Russian prisoners of war, invaded Hemnskjela in May 1941 and the whole island was converted into a powerful fortification with heavy cannon emplacements, bunkers and different kinds of buildings.

Visit a command bunker, see the extensive defence system and hear how the locals related to the German occupiers and the Russian prisoners. The exhibition and bunker are part of the Coastal Museum.

POSSIBLE COMBINATION: CRUISING THE TODALSFJORD — IDYLIC AND SECLUDED

COMBINE YOUR
CALL AT SMØLA OR
HITRA WITH A CRUISE
ON THE
TODALSFJORD



Todalen is a small village with around 350 inhabitants, situated about 120 km from Kristiansund. From the Todalsfjord, the valley rises towards Trollheimen and Kårvatn, where the road ends.

OPTIONS:

1: FJORD CRUISE OR OVERLAND TOUR WITH TENDERING IN TODALEN

Arrival by cruise ship – northbound from Ålesund/ Molde/Kristiansund or southbound from Trondheim/Hitra/Smøla – via Årsundfjorden, Halsafjorden, Stangvikfjorden into Todalsfjorden (about 2.5 hrs sailing time (38 nm) from Grip pilot station). Anchorage near Svinvik Arboretum where a floating dock will be arranged for tendering.

Various excursions locally in Todalen. Also do-

able as overland tour from/to Kristiansund via Tingvoll.

2: FJORD CRUISE WITHOUT TENDERING

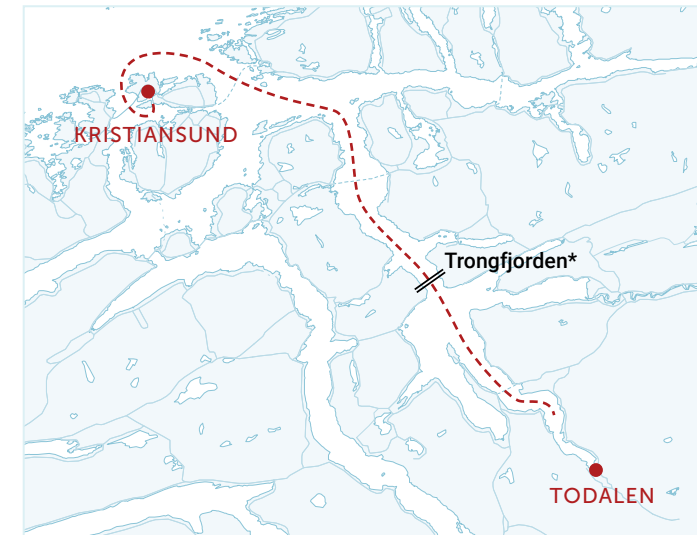
For cruise ships calling Kristiansund, Smøla or Hitra.

3: EXCURSION BY BUS FROM KRISTIANSUND

Cruise ship docking in Kristiansund. Day trip (6–8 hours) by bus to Todalen for various excursions locally.

No additional port fee will be required for anchoring in the Todalsfjord, if combined with a call to Kristiansund, Smøla or Hitra.

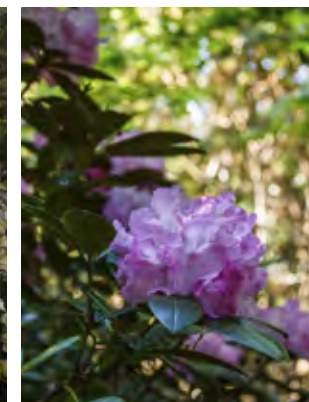
Contact Visit Northwest (+47) 70 23 88 00 /
info@visitnorthwest.no / www.visitnorthwest.no



**Due to an overhead cable located at Trongfjorden, max. air draft is set to 35 m. This height is at its lowest point. Ships can be guided by the pilot to pass closer to the shore, where the height is 70 m. Please don't hesitate to contact us for further details.*



Local attractions and activities:



Kårvatn with Nauståfossen waterfall

A mountain farm beautifully situated about a 20-min. drive from the tender pier to the top of Todalen valley. From here you can follow a hiking trail to the mighty Nauståfossen waterfall (about 1km/20 min. each way) with its two drops of 110 m.

Svinvik Arboretum – botanical garden

A unique botanical garden with 350 different types of rhododendron and 250 types of conifers planted on the mountain slopes down to the fjord. There are also many unusual and beautiful deciduous trees, shrubs and flower beds. Café with homemade specialties of own produce.

TIP! Best time to experience the beautiful flowering is usually in May/June, but this depends on the spring temperatures.

Todalshytta mountain lodge

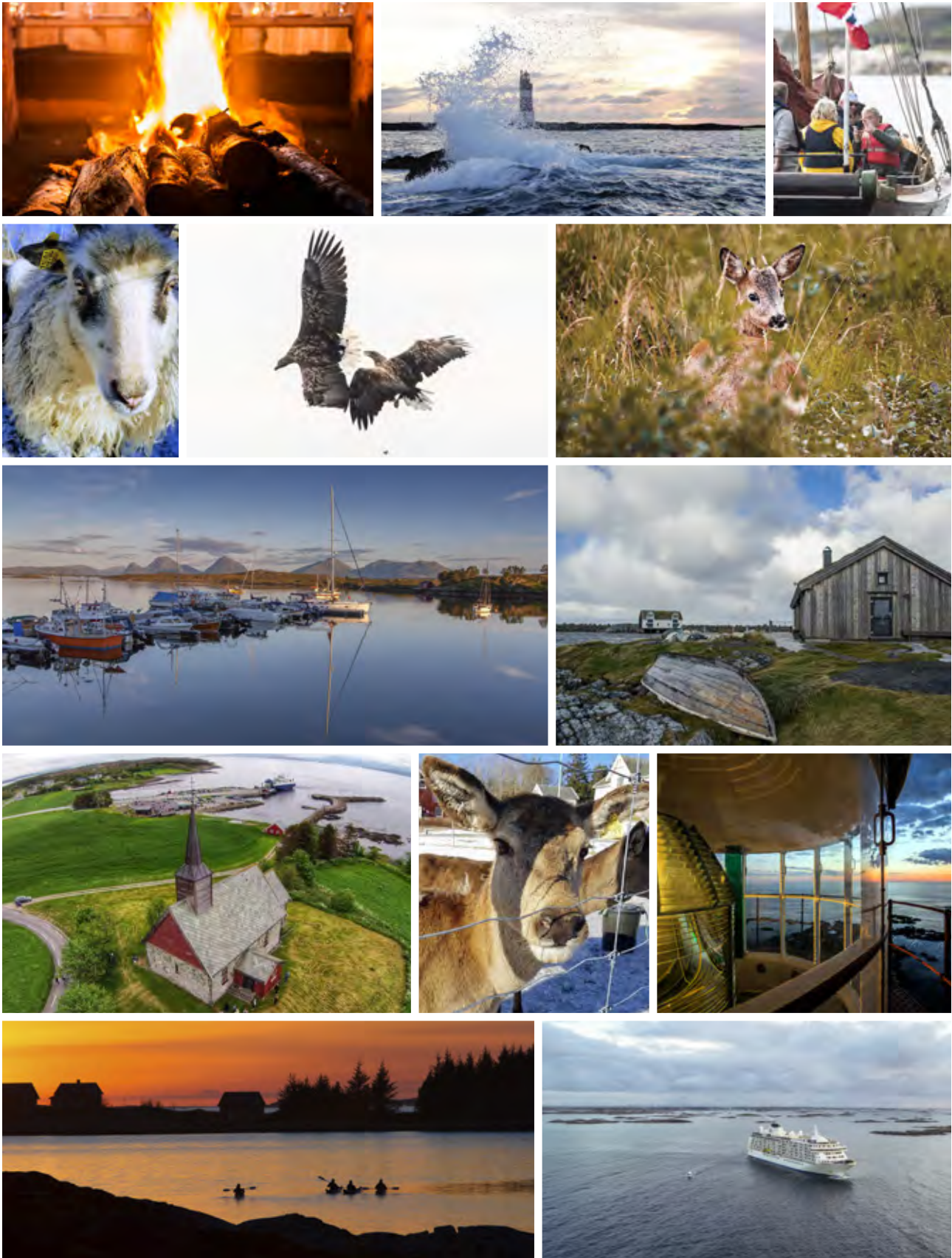
A culture-historical treasure in beautiful surroundings, built by the English businessman Ethelbert Lort Phillips in 1901, used as a location for salmon fishing by Englishmen. Possibilities for coffee/snack/lunch.

Svinvik hiking trail

This popular and easy round trip goes along the old main roads into Todalen and offers stunning views. The trip starts at the parking lot on the upper side of the road at Svinvik's arboretum. The first part is uphill, then flat and downhill. The roundtrip is about 4.5 km/1 hour (not wheelchair accessible).



TECHNICAL INFO:	Fjord cruise only	Fjord cruise with tendering
Max. ship length	300 m	250 m
Max. ship draft	No limit	No limit
Max. air draft	35/70 m*	35/70 m*



CONTACT INFORMATION

PORT AUTHORITY
Port of Kristiansund & Nordmøre
info@knhavn.no
(+47) 40 00 65 04
www.knhavn.no

Contact persons:
Maritime: Svein Skomsøy, havnevakt@knhavn.no
Marketing: Erika Indergaard, ei@knhavn.no

**DESTINATION INFO AND
LOCAL SERVICES**
Visit Northwest
info@visitnorthwest.no
(+47) 70 23 88 00
www.visitnorthwest.no
Contact person: Synnøve Henden,
synnove@visitnorthwest.no

Cruise Smøla
sindre@cruisesmola.com
(+47) 482 38 830

Explore Hitra
post@explorehitra.no
(+47) 919 14 171
www.explorehitra.no

Visit Hitra (Hitra tourist office)
post@kystmuseet.no
(+47) 72 44 40 10
www.visithitra.com

Kystmuseet, Hitra (The Coastal Museum)
post@kystmuseet.no
(+47) 72 44 40 10
www.kystmuseet.no



PHOTO CREDITS: Audun Lie Dahl: Front page, p. 14. Sindre Holberg: p. 2, 11, 13, 38, 40 (back). Oddgeir Visnes: p. 5, 12, 38. Visit Nordvest: p. 12, 14. Smøla Kajakk: p. 6, 15. Wigdis Wollan: p. 13, 16, 19, 38. Smøla kommune: p. 16. Smøla havfiskesenter/Christian Hoch: p. 17. Nekton Havbruk AS: p. 18. Terje Rakke/Visit Nordvest: p. 19, 33, 34. Smøla Golfklubb: p. 19. Vindfang AS: p. 20, 25, 29, 30, 33, 35, 38. Hitra-Frøya Lokalavis AS: p. 22. Explore Hitra: p. 25, 26, 28, 30, 34, 38. Dolmsundet Hotell: p. 26, 38. DalPro AS: p. 27, 33, 39. Bjørn Fjeldvær: p. 28. HitraMat AS: p. 31. Vindfang AS/Kystmuseet: p. 32, 35. Hitra Hestesenter: p. 33, 35. Steinar Melby: p. 36, 37. Jørgen Lie/Seabed: p. 38, 39.

PORT OF | KRISTIANSUND & NORDMØRE

